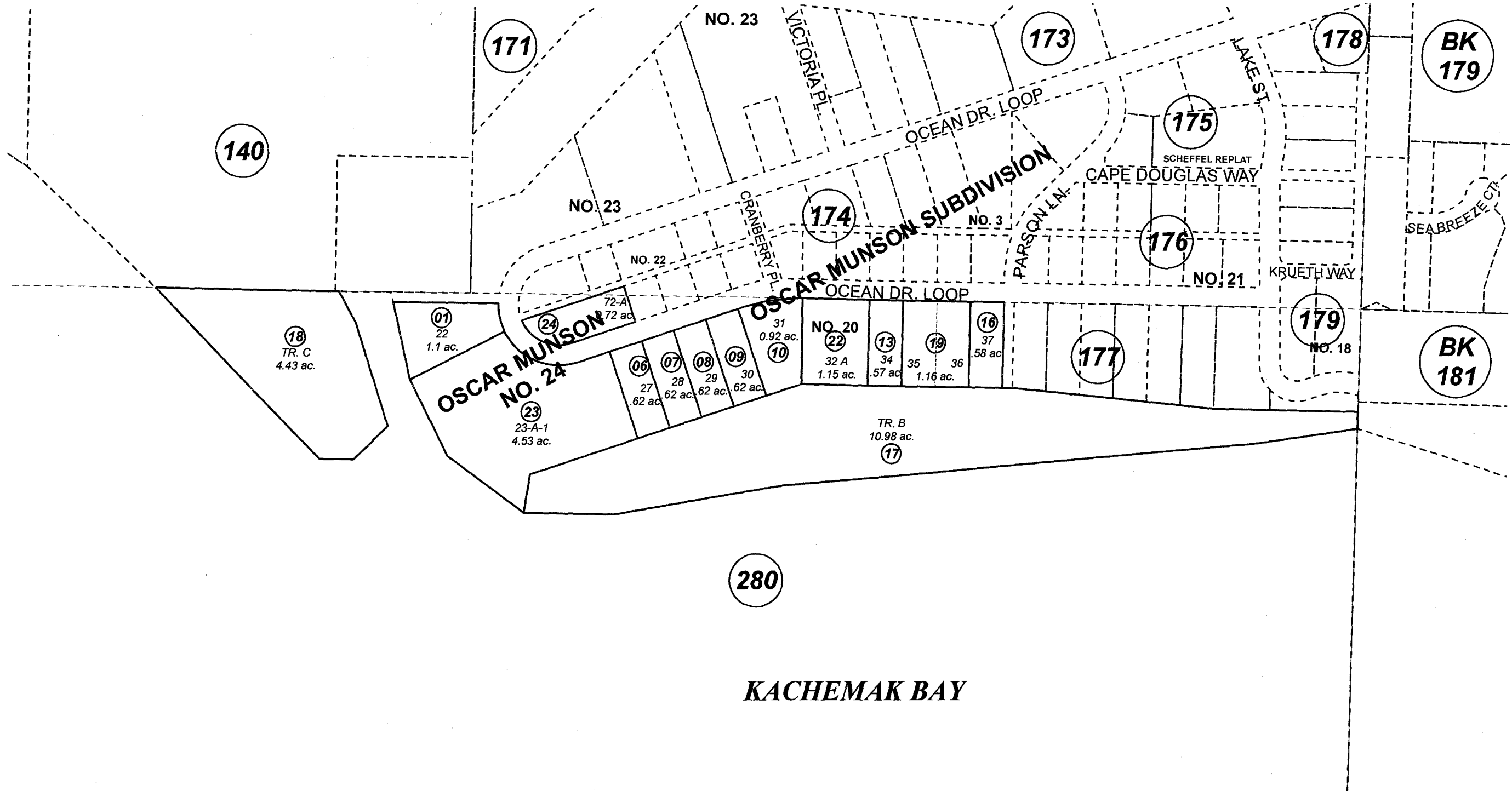


POR. S1/2 SE1/4 SEC. 20 & LOTS 1 & 2 SEC. 29, T06S, R13W, S.M. 177-180



280

KACHEMAK BAY



AUGUST 18, 2008

For 2009 assessment roll		
Delete	Add	Revise
	To	
	17427-29	
20,21		23,24

Assessor's Map
Kenai Peninsula Borough

OSCAR MUNSON SUB REVISION □ HM0810003
 OSCAR MUNSON SUB REVISION □ HM5703415
 OSCAR MUNSON SUB NO 20 □ HM2002044
 OSCAR MUNSON SUB NO 24 □ HM2008049

This map is prepared for Kenai Peninsula Borough Assessing Dept. use only and is not intended for conveyance nor is it a survey.
 Note- Assessor's block Numbers Shown in Ellipses
 Assessor's Parcel Numbers Shown in Circles