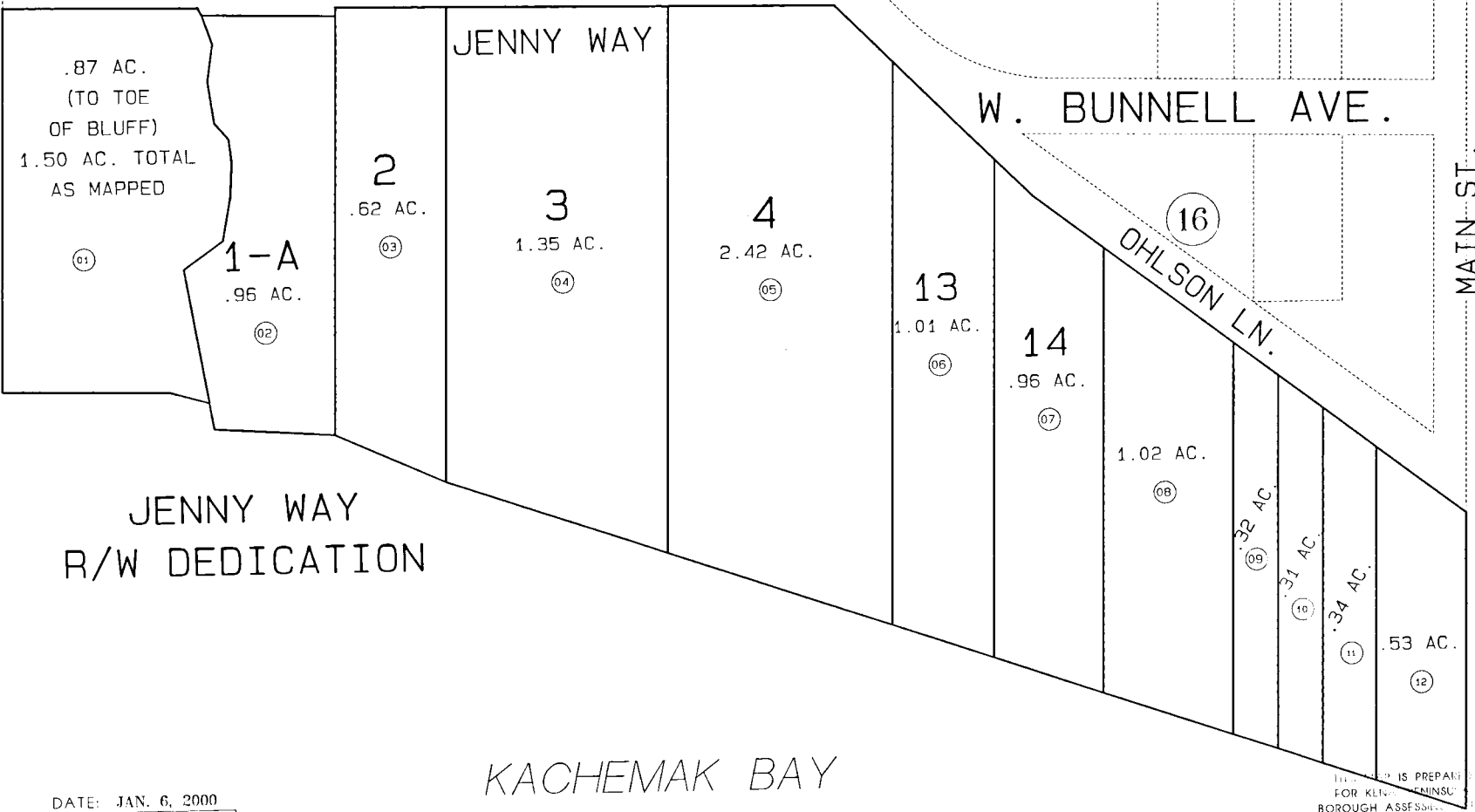


17



19

16

JENNY WAY R/W DEDICATION

KACHEMAK BAY



DATE: JAN. 6, 2000

FOR 2000	ASSESSMENT ROLL
DELETE	ADD REVISED
TO	
2	

Assessor's Map
Kenai Peninsula Borough

BERRY ADDN. (UNRECORDED)
BERRY SUB NO 2 JENNY WAY R/W DEDICATION HM990062

NOTE - Assessor's Block Numbers Shown In Ellipses
Assessor's Parcel Numbers Shown In Circles

THIS MAP IS PREPARED FOR KENAI PENINSULA BOROUGH ASSESSMENT. USE ONLY AND IS NOT INTENDED FOR CONVEYANCE NOR IS IT A SURVEY.