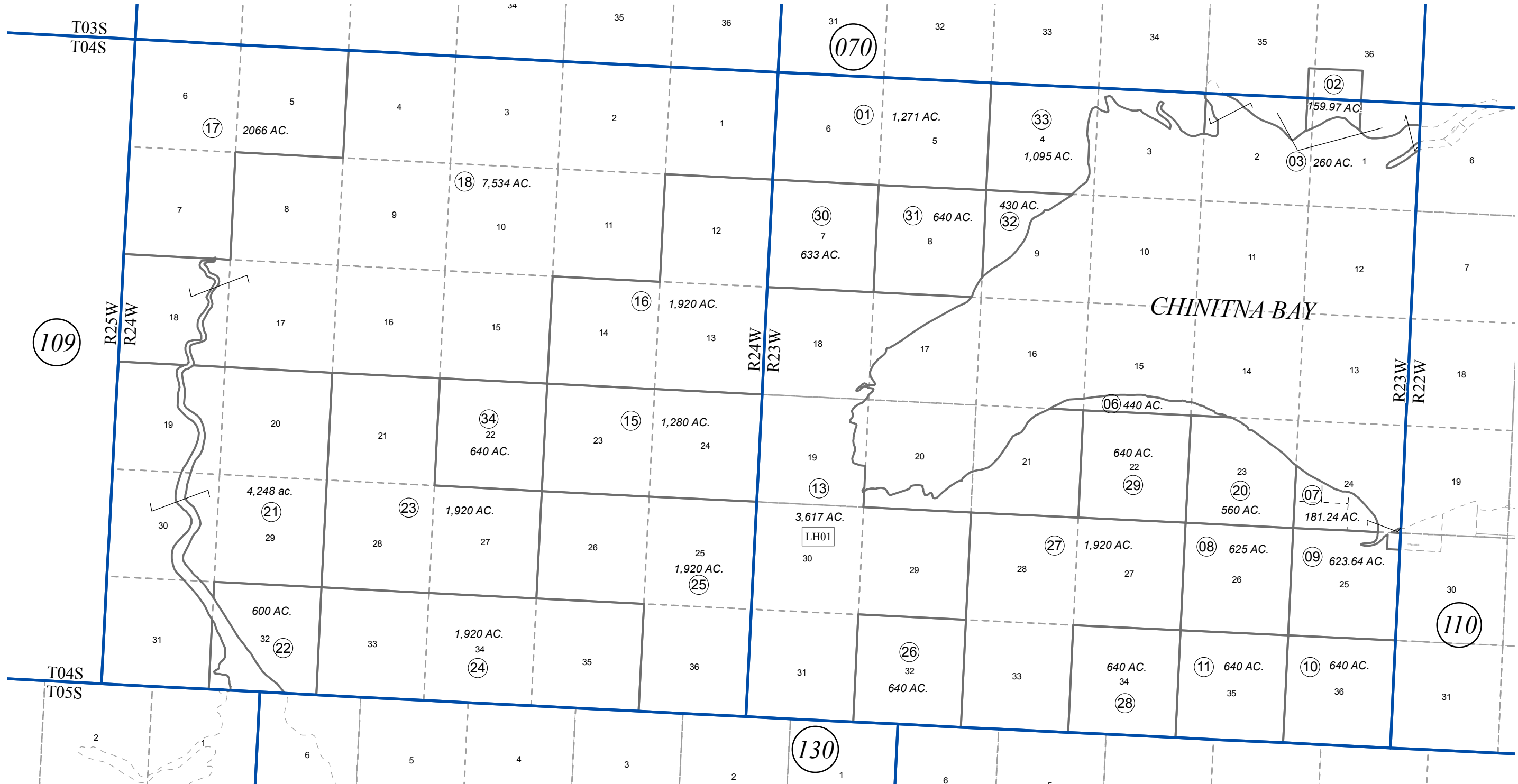


T04S, R23W, R24W, S.M.

231-100

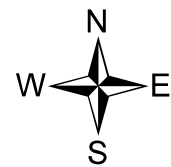


109

110

130

JANUARY 31, 2018



0 0.25 0.5 1 Miles

For 2018 assessment roll		
Delete	Add	Revise
To		13
(ADDED LEASE HOLD REFERENCE)		

Assessor's Map
Kenai Peninsula Borough

US SURVEY 7526 IL0007526

Note- Assessor's block Numbers Shown in Ellipses
Assessor's Parcel Numbers Shown in Circles

This map is prepared
for Kenai Peninsula
Borough Assessing Dept.
use only and is not
intended for conveyance
nor is it a survey.