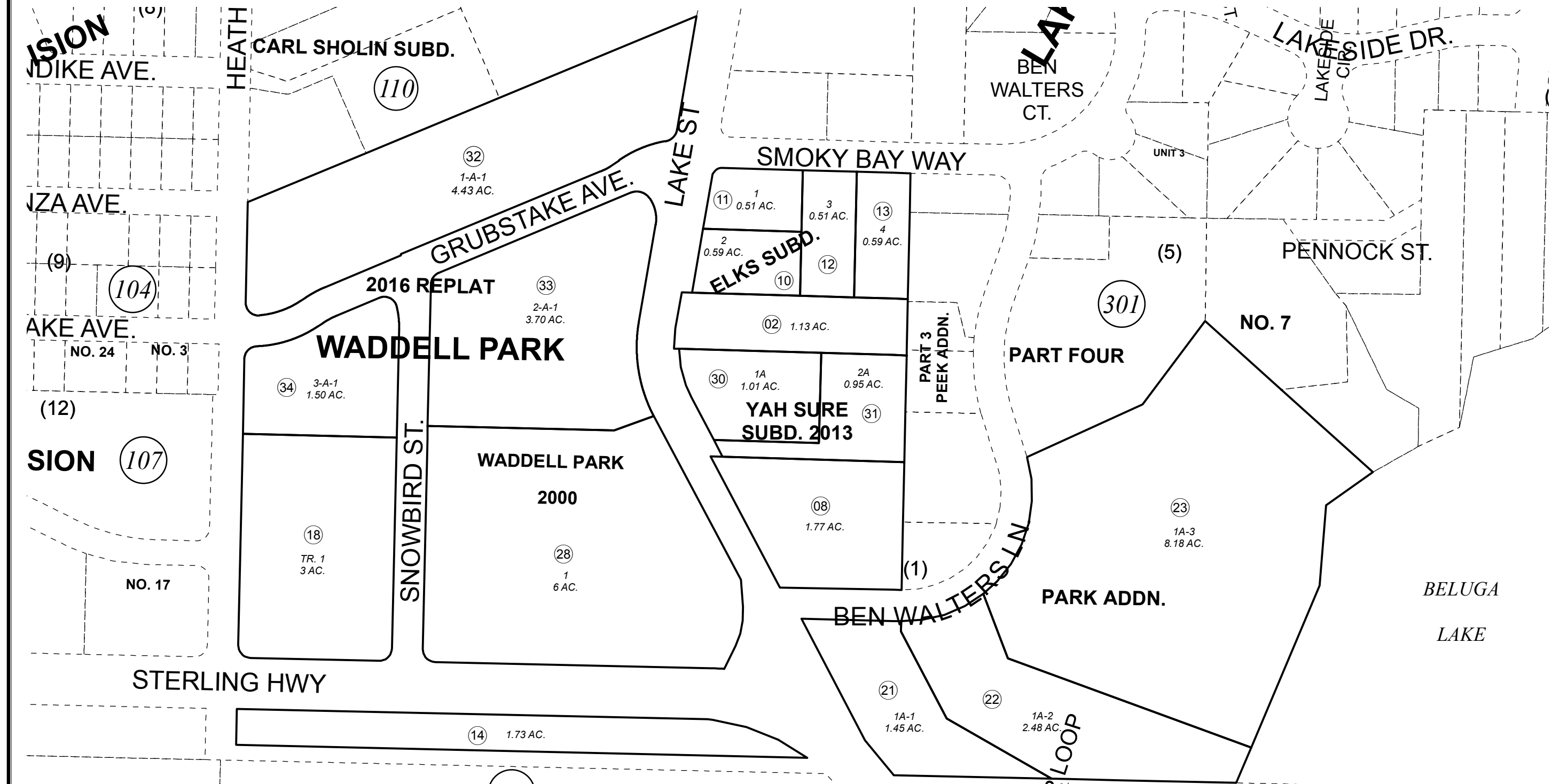


POR. SEC. 20, T06S, R13W, S.M.

177-120



0 50 100 200 Feet

NOVEMBER 3, 2016

For 2017 assessment roll		
Delete	Add	Revise
	To	
27,29	32-34	

Assessor's Map
Kenai Peninsula Borough

- WADDELL SUB □ HM0003743
- ELKS SUB □ HM0770089
- WADDELL PARK SUB □ HM0840026
- LAKESIDE VILLAGE PARK ADDN REPLAT □ HM0840122
- LAKESIDE VILLAGE SUB PARK ADDN REPLAT □ HM0840122
- YAH SURE SUB □ HM0850075
- WADDELL PARK SUB 1985 REPLAT □ HM0870027
- WADDELL PARK 2000 □ HM2000020
- YAH SURE SUB 2013 HM2013054
- WADDELL PARK SUB 2016 REPLAT □ HM2016021

Note- Assessor's block Numbers Shown in Ellipses
Assessor's Parcel Numbers Shown in Circles

This map is prepared for Kenai Peninsula Borough Assessing Dept. use only and is not intended for conveyance nor is it a survey.