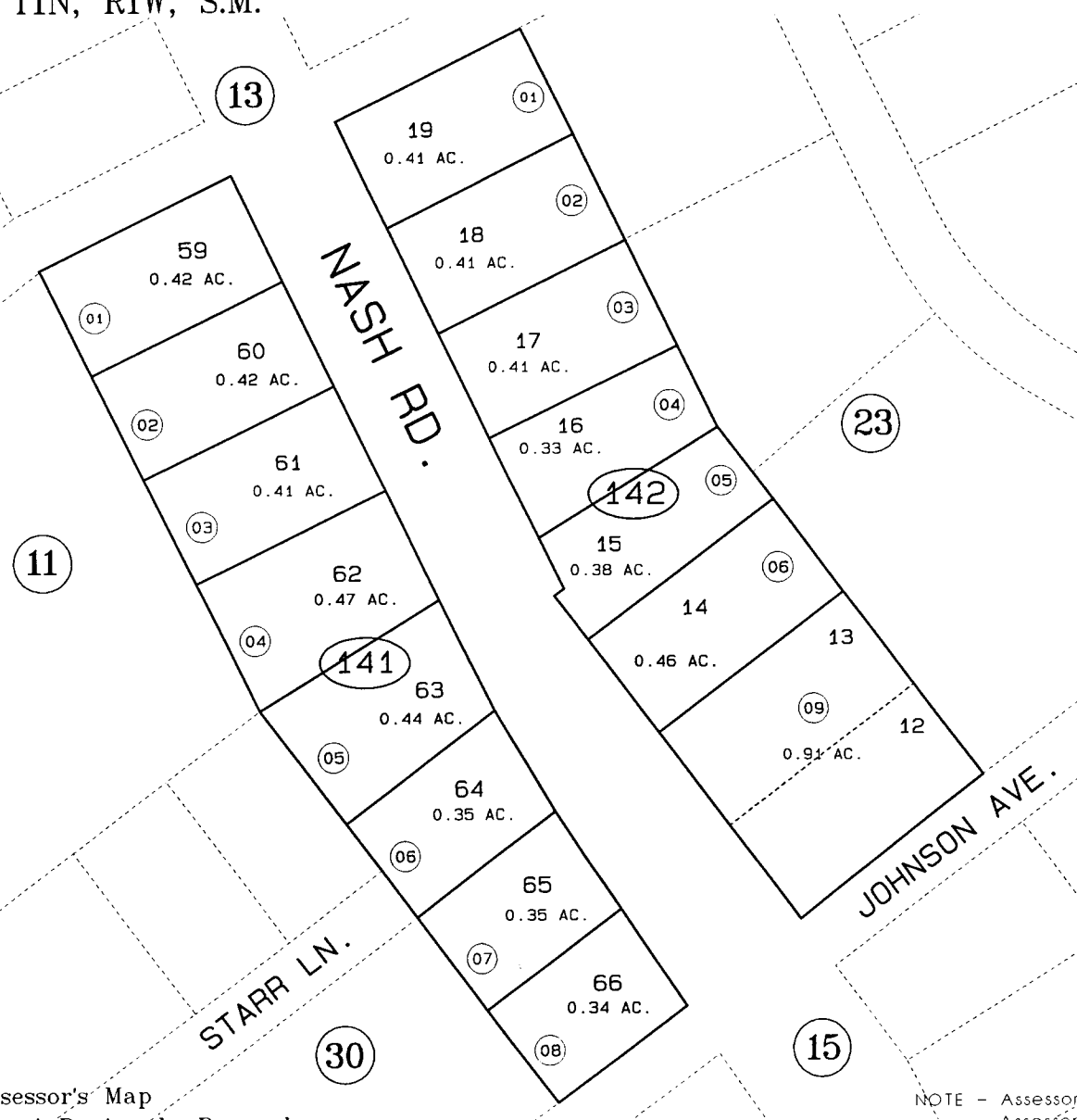


PORTION SECTION 36, T1N, R1W, S.M.

145-141,142

CLYDE KING SUBD. SW000020



11

13

23

15

30

141

142

DATE: JAN. 18, 1995

FOR 19 95 ASSESSMENT ROLL		
DELETE	ADD	REVISED
TO		
7, 8	9	

Assessor's Map  
Kenai Peninsula Borough

THIS MAP IS PREPARED FOR KENAI PENINSULA BOROUGH ASSESSING DEPT. USE ONLY AND IS NOT INTENDED FOR ANY OTHER USE OR REPRESENTATION

NOTE - Assessor's Block Numbers Shown in Ellipses  
Assessor's Parcel Numbers Shown in Circles